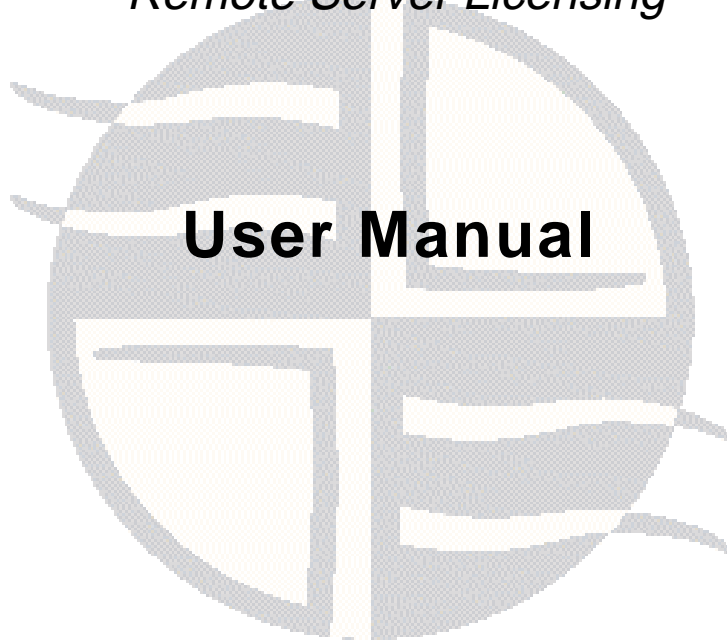


Easysoft Data Access

Remote Server Licensing





Version 10.

Publisher: Easysoft Limited

Thorp Arch Grange

Thorp Arch

Wetherby

LS23 7BA

United Kingdom

Copyright © 1993-2003 by Easysoft Limited.

All rights reserved.

You may not reverse engineer, decompile or disassemble this manual. Information in this manual is subject to change without notice. Companies, names, and data used in examples are fictitious unless otherwise noted.

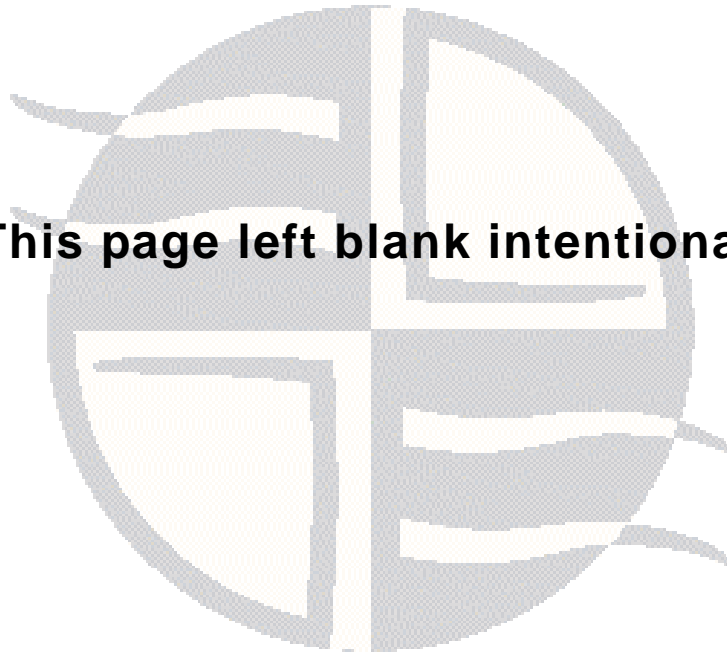
The names of companies referred to herein, their corporate logos, the names of their hardware and software may be trade names, trademarks or registered trademarks of their respective owners.

Easysoft and the Easysoft logo are registered trademarks of Easysoft Limited.

CONTENTS

List of Figures	5
Preface	7
	Intended Audience	8
	Displaying the Manual	8
	Notational Conventions	9
	Typographical Conventions	10
	Contents	11
	Trademarks	12
Chapter 1	Remote Licensing	13
	Introduction	14
	Configuring a license server machine	15
	Configuring a product machine	27
Appendix A	Glossary	31
Index	33

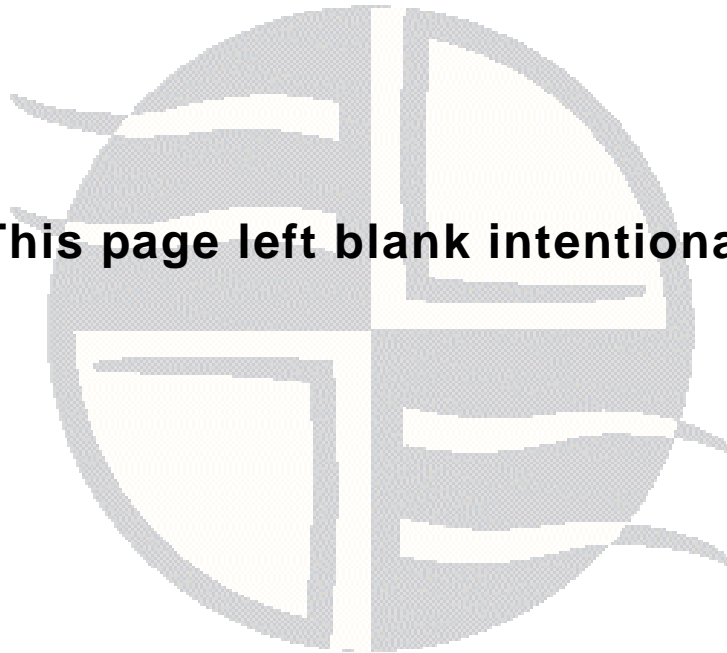
This page left blank intentionally



LIST OF FIGURES

Figure 1: Entering Contact Information	16
Figure 2: The License Type screen.	17
Figure 3: The Authorization Code screen	17
Figure 4: The Details screen	18
Figure 5: The License Added screen	18
Figure 6: The Remote License information screen.	19
Figure 7: The Welcome dialog box	21
Figure 8: The Choose Destination Location dialog box	22
Figure 9: The Select Program Folder dialog box.	23
Figure 10: The Setup Complete dialog box	24
Figure 11: The Services dialog box	25
Figure 12: Remote Licensing via the License Manager.	27
Figure 13: Entering Remote Server Name machine detail only	28
Figure 14: Entering Remote Server Name machine and domain details	29
Figure 15: Easysoft License Server Registry settings.	29

This page left blank intentionally



PREFACE



About this manual

This manual is intended for use by anyone who wants to access InterBase application data, stored on a Windows or Unix machine, from an ODBC-compliant application.

Chapter Guide

- **Intended Audience**
- **Displaying the Manual**
- **Notational Conventions**
- **Typographical Conventions**
- **Contents**
- **Trademarks**

PREFACE

About this manual

Intended Audience

The sections written for the Microsoft Windows platforms require some familiarity with the use of buttons, menus, icons and text boxes. If you have any experience of Apple Macintosh computers, Microsoft Windows or the X Window System, you will have no difficulty with these sections.

The Unix-based sections require that you are experienced at using a Unix shell, and can perform basic functions like editing a file. More complex activities are detailed more clearly and do not require any knowledge of specialist Unix shells.

Displaying the Manual

This manual is available in the following formats:

- Portable Document Format (PDF), which can be displayed and printed using the Acrobat Reader, available free from Adobe at <http://www.adobe.com>.
- HTML (the format Easysoft recommend for viewing onscreen).

Notational Conventions

Across the range of Easysoft manuals you will encounter passages that are emphasized with a box and a label.

A *note box* provides additional information that may further your understanding of a particular procedure or piece of information relating to a particular section of this manual:

NB Note boxes often highlight information that you may need to be aware of when using a particular feature.

A *reference box* refers to resources external to the manual, such as a useful website or suggested reading:

REF For more manuals that use this convention, see the rest of the Easysoft documentation.

A *platform note* provides platform-specific information for a particular procedure step:

Linux

In Linux you must log on as the `root` user in order to make many important changes.

A *caution box* is used to provide important information that you should check and understand, prior to starting a particular procedure or reading a particular section of this manual:

Caution!

Be sure to pay attention to these paragraphs because Caution boxes are important!

Information has also been grouped within some chapters into two broad classes of operating system, Windows and Unix, for which side tabs are used to help you turn to the section relevant to you.

Typographical Conventions

To avoid ambiguity, typographic effects have been applied to certain types of reference:

- User interface components such as icon names, menu names, buttons and selections are presented in bold, for example:

Click **Next** to continue.

Where there is a chain of submenus, the following convention is used:

Choose **Start > Programs > Command Prompt**.

- Commands to be typed are presented using a `monospace` font, for example:

At the command prompt type `admin`.

- Keyboard Commands

It is assumed that all typed commands will be committed by pressing the `<Enter>` key, and as such this will not normally be indicated in this manual. Other key presses are italicized and enclosed by angle brackets, for example:

Press `<F1>` for help.

- File listings and system names (such as file names, directories and database fields) are presented using the `monospace` plain text style.

Contents

- **Remote Licensing**
An overview of Easysoft Remote Server Licensing.
- Appendices
Comprising a Glossary.

PREFACE

About this manual

Trademarks

Throughout this manual, *Windows* refers generically to Microsoft Windows 95, 98, 2000, NT or XP, which are trademarks of the Microsoft Corporation. The X Window system is specifically excluded from this and is referred to as *The X Window System* or just *X*.

Note also that although the name UNIX is a registered trademark of UNIX System Laboratories, the term has come to encompass a whole range of UNIX-like operating systems, including the free, public Linux and even the proprietary Solaris. Easysoft use Unix (note the case) as a general term covering the wide range of Open and proprietary operating systems commonly understood to be Unix 'flavors'.

Easysoft and Easysoft Data Access are trademarks of Easysoft Limited.

InterBase is a trademark of the Borland Software Corporation.

REMOTE LICENSING

A guide to Easysoft Remote Server Licensing

The Easysoft License Server is a standalone Windows program which enables a user to license an Easysoft product on multiple machines with a single license key.

NB The Easysoft License Server requires the Windows Services facility and therefore will NOT run on Windows 9x platforms.

Chapter Guide

- [Introduction](#)
- [Configuring a license server machine](#)
- [Configuring a product machine](#)

REMOTE LICENSING

A guide to Easysoft Remote Server Licensing

Introduction

The Easysoft License Manager obtains a license for each machine on which an Easysoft software program is installed, granting a specific number of concurrent connections, one of which is allocated each time that component is utilised.

Therefore, if a five-connection license is purchased then five individual connections can be made concurrently before a licensing error message is reported and the next user prevented from using the software.

NB Licenses are based on connections, not users. It is possible for a user to make multiple connections.

The Easysoft License Server is a standalone piece of software which can be installed on any machine that is available via a network to all the relevant target machines on which licenses are required.

It enables a user to license multiple machines (which otherwise would require multiple authorization codes) by linking remotely to the Easysoft License Server.

Rather than obtaining a license with an authorization code for each machine using the Easysoft License Manager, the user is required to click the **Remote License** button and enter the DNS name (or IP address) and port number of the license server machine.

For added security and reliability of access, the Easysoft License Server may be installed on more than one machine. This provides a backup in the event of a crash on the primary machine by allowing a user to amend the DNS field to that of the alternative machine.

NB Installing the Easysoft License Server on a backup license server machine would require a second Easysoft license.

Configuring a license server machine

OBTAINING AN EASYSOFT PRODUCT

1. Download the Easysoft product software if you have not already done so.
2. Obtain your authorization code by purchasing the software from Easysoft's web site (<http://www.easysoft.com>) or by contacting the Sales Department on +44 (0) 1937 860 000.

Your authorization code(s) will be emailed to you.

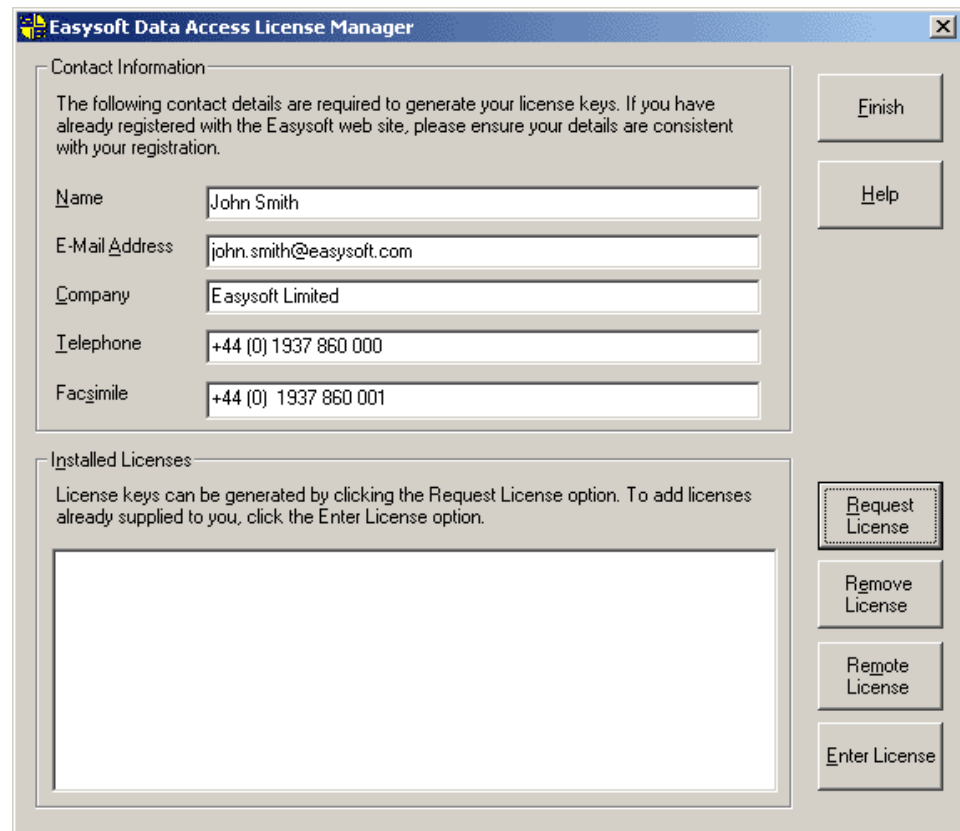
3. Install the Easysoft product software on the license server machine.
This will install the Easysoft License Manager, update the required registry settings and automatically start the Easysoft License Manager to allow you to obtain your remote product license.

REMOTE LICENSING

A guide to Easysoft Remote Server Licensing

OBTAINING A REMOTE LICENSE

1. Fill in the **Name, E-Mail Address, Company, Telephone** and **Facsimile** fields in the **Contact Information** screen:



The screenshot shows a window titled "Easysoft Data Access License Manager". It contains two main sections: "Contact Information" and "Installed Licenses".

Contact Information: This section contains a text box with the following instructions: "The following contact details are required to generate your license keys. If you have already registered with the Easysoft web site, please ensure your details are consistent with your registration." Below this are five input fields:

- Name: John Smith
- E-Mail Address: john.smith@easysoft.com
- Company: Easysoft Limited
- Telephone: +44 (0) 1937 860 000
- Facsimile: +44 (0) 1937 860 001

Installed Licenses: This section contains a text box with the following instructions: "License keys can be generated by clicking the Request License option. To add licenses already supplied to you, click the Enter License option." Below this is a large empty rectangular area.

Buttons: On the right side of the window, there are several buttons: "Finish", "Help", "Request License" (highlighted with a dotted border), "Remove License", "Remote License", and "Enter License".

Figure 1: Entering Contact Information

2. Click **Request License**.

The **License Type** dialog box is displayed:



Figure 2: The License Type screen

3. Choose **Non-expiring License** and then click **Next**.

The **Authorization Code** dialog box is displayed:

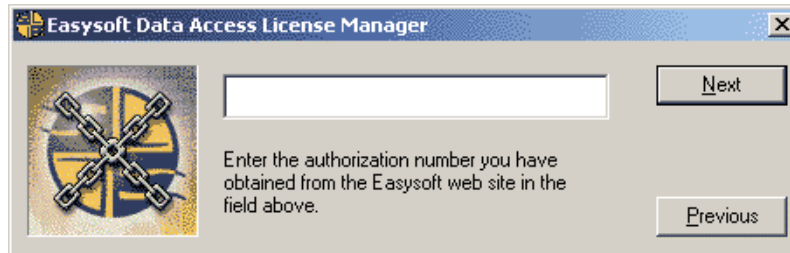


Figure 3: The Authorization Code screen

4. Enter your authorization code and then click **Next**.

REMOTE LICENSING

A guide to Easysoft Remote Server Licensing

The **Your Details** dialog box is displayed:



Figure 4: The Details screen

5. Choose **Online Request**.

A message displays the number of added licenses:

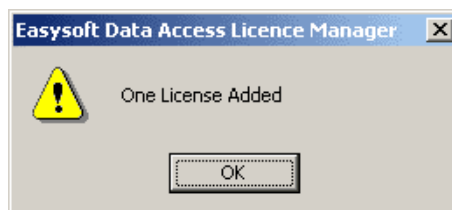


Figure 5: The License Added screen

6. Click **OK**.

The **Contact Information** screen of the Easysoft License Manager displays details of the remote license you have just obtained.

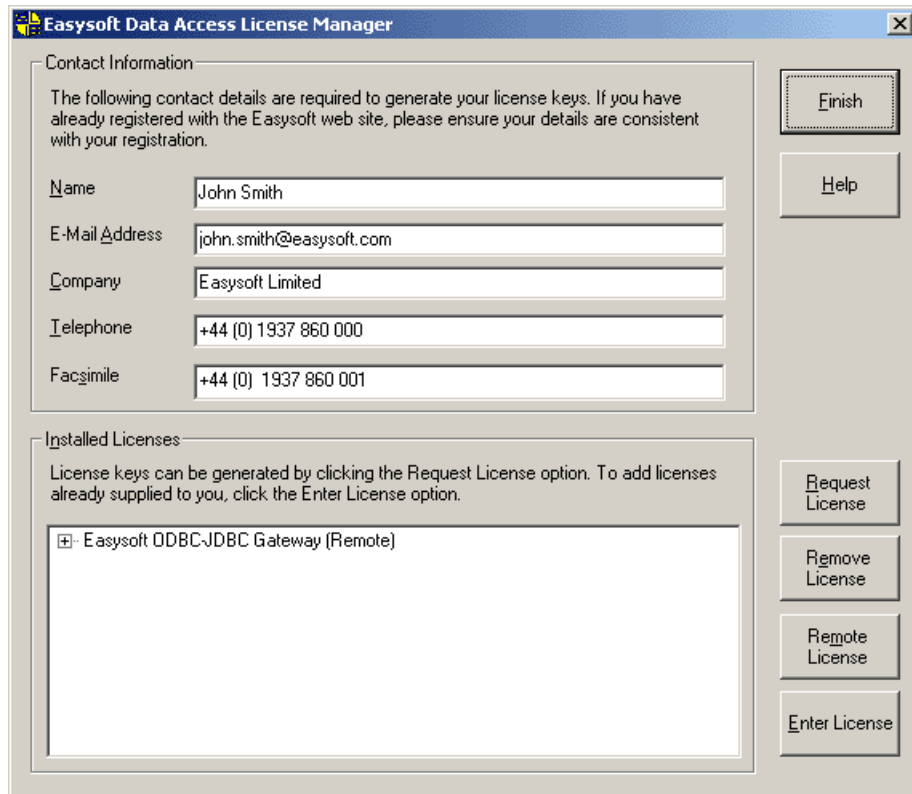


Figure 6: The Remote License information screen

A valid remote license has now been obtained.

NB

If another remote license is obtained, which has a different number of valid license slots, then it will be necessary to stop and restart the Easysoft License Server Windows Service in order for the amended functionality to be registered on the license server machine.

REMOTE LICENSING

A guide to Easysoft Remote Server Licensing

7. Click **Finish**.

Next, it is necessary to obtain and install the Easysoft License Server on this machine.

OBTAINING THE EASYSOFT LICENSE SERVER

1. Download the Easysoft License Server from the Easysoft FTP site, which is available 24 hours a day at <ftp://ftp.easysoft.com>.
2. Change to the `pub/license_server` directory and then select `EasysoftLicenseServer.exe`.
3. Click the **Save** button on the **File Download** dialog box and choose a directory in which to store the program file.

INSTALLING THE EASYSOFT LICENSE SERVER

1. Click on the `EasysoftLicenseServer` file.

Caution!

Please shut down other Windows programs before installing. In particular, if Microsoft Outlook is running there can be a pause of up to several minutes when InstallShield is started.

There will be a short delay while setup prepares the wizard to guide you through the rest of the install procedure.

The Easysoft License Server **Welcome** dialog box is then displayed:

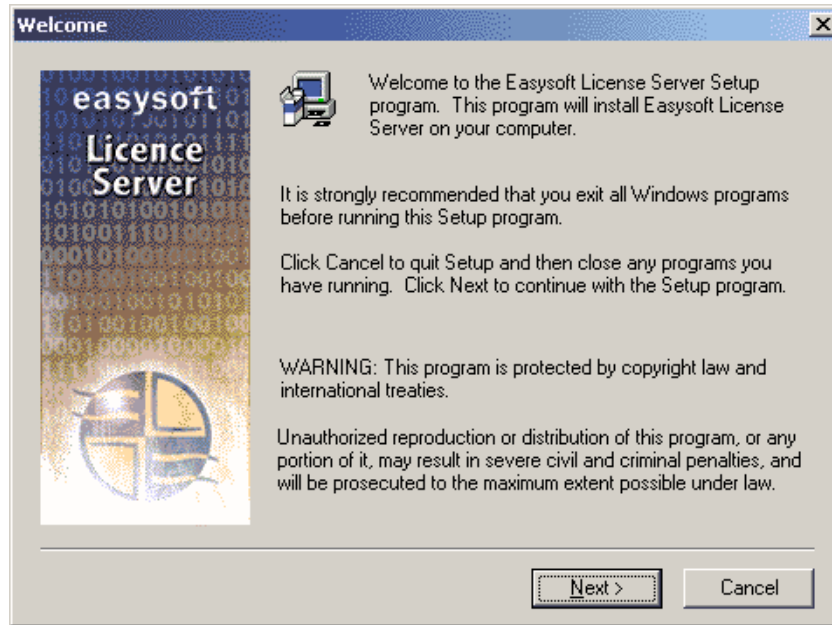


Figure 7: The Welcome dialog box

2. Click **Next**.

REMOTE LICENSING

A guide to Easysoft Remote Server Licensing

The **Choose Destination Location** dialog box is displayed:

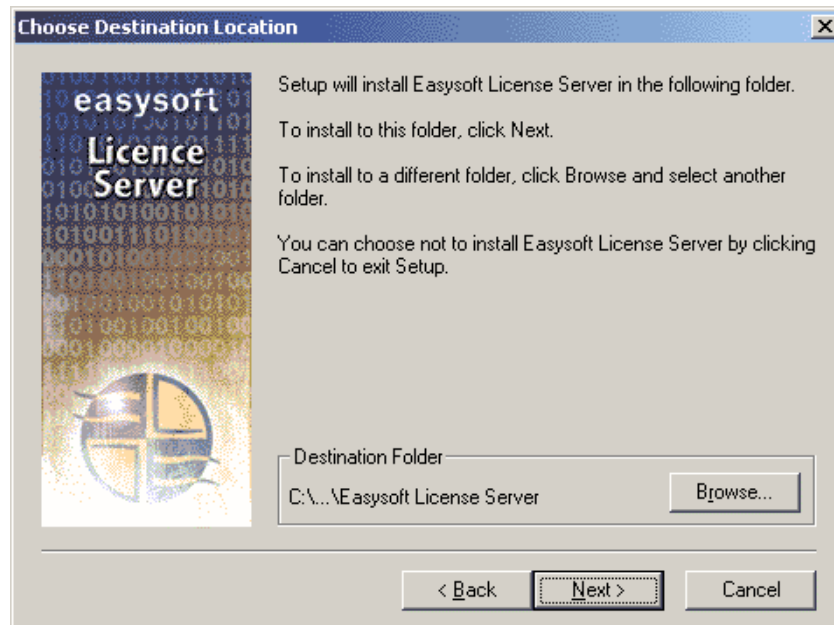


Figure 8: The Choose Destination Location dialog box

3. Click **Next**.

The **Select Program Folder** dialog box is displayed:

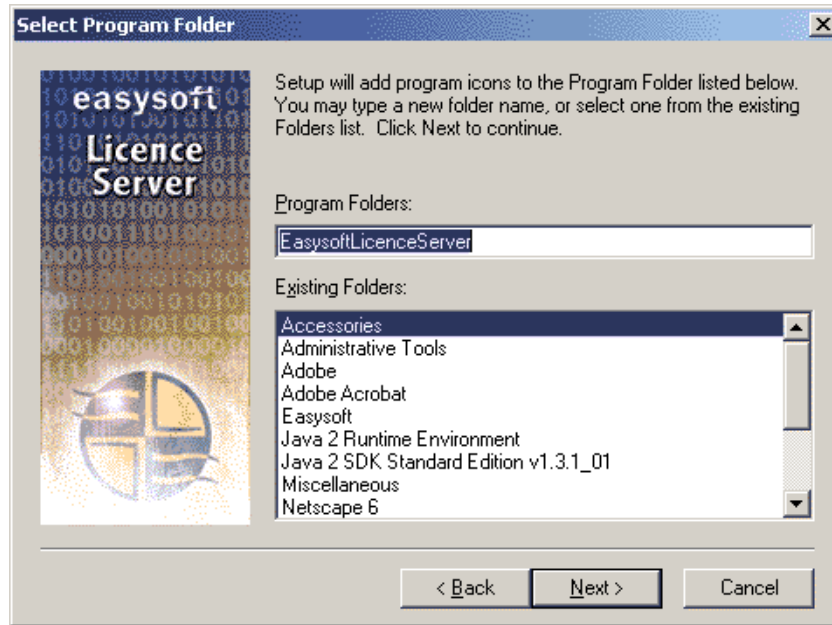


Figure 9: The Select Program Folder dialog box

4. Click **Next**.

REMOTE LICENSING

A guide to Easysoft Remote Server Licensing

The **Setup Complete** dialog box is displayed:

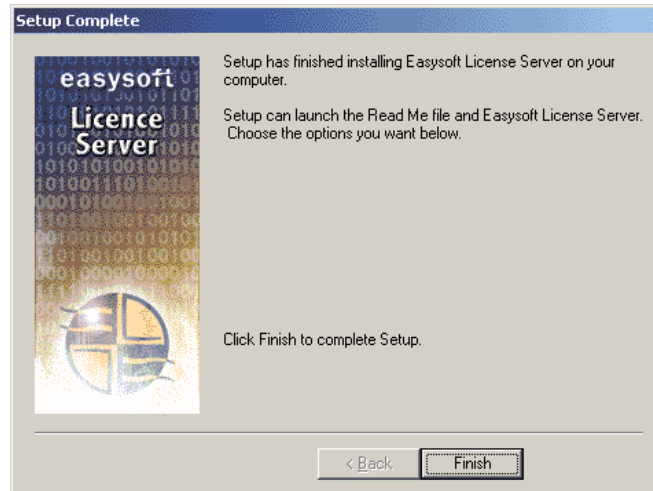


Figure 10: The Setup Complete dialog box

5. Click **Finish**.

The installation is now complete and a Windows Service is started up for the Easysoft License Server:

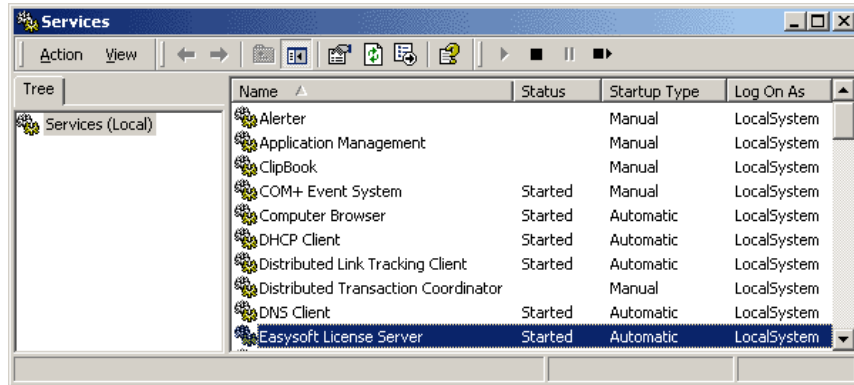


Figure 11: The Services dialog box

UNINSTALLING THE EASYSOFT LICENSE SERVER

This section explains how to remove the Easysoft License Server from your system.

1. Select **Start > Settings > Control Panel**, then double-click the **Add/Remove Programs** icon.
You are then presented with a list of applications that can be automatically removed.
2. Select **Easysoft License Server** and click the **Add/Remove** button.
3. Click **Yes** to confirm that you wish to remove the Easysoft License Server and all its components.

The system begins to remove all the components.

If shared components seem not to be required, you will be prompted to decide whether or not to delete them.

REMOTE LICENSING

A guide to Easysoft Remote Server Licensing

Under Windows, install/uninstall procedures incorporate a mechanism in the registry to determine whether or not shared files are still required by other programs.

NB

Sometimes this database can become out-of-date, for instance if the user deleted an application directly, without using **Add/Remove Programs**, or if the registry was 'repaired' after a system crash.

4. If you feel confident with the registry (i.e. your system has had relatively few programs installed and removed) you should click the **Yes** or **Yes to All** button to continue.

– OR –

If you have any doubts (e.g. uninstall procedures have failed in the past) you should click the **No** or **No to All** buttons.

The uninstall process removes the Easysoft License Server components from your system.

NB

If files have been created in any of the installation directories then these directories will not be removed. In this case, the uninstall program will issue a warning and you can click **Details** to find out what directories remain.

5. On completion, click **OK** to go back to the Control Panel **Install/Uninstall** window.

6. The uninstall process is complete.

Any licenses you obtained for the Easysoft License Server and other Easysoft products are held in the Windows registry.

When you uninstall, your licenses are not removed so you do not need to relicense the product if you reinstall or upgrade.

Configuring a product machine

Once the license server has been configured, it can be used to license multiple product machines without the need for multiple Easysoft authorization codes.

Caution! The instructions in this section must be followed for each target machine.

1. Install your Easysoft product.

This will also automatically install and start the Easysoft License Manager at the end of the product install:

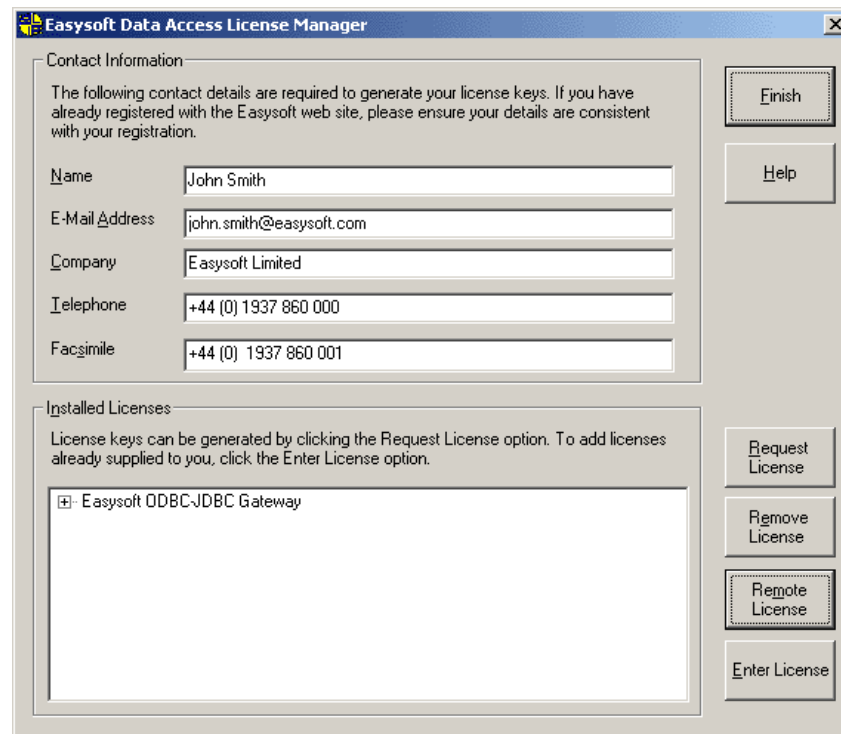


Figure 12: Remote Licensing via the License Manager

REMOTE LICENSING

A guide to Easysoft Remote Server Licensing

2. Click the **Remote License** button from within the Easysoft License Manager.

NB Note that the contact information on this screen is irrelevant, because licensing takes place on the license server, rather than on individual product machines.

3. Clicking the **Remote License** button will prompt the user to enter:
 - the DNS name (or IP address) of the license server machine
 - the port number by which each product machine is to access the license server machine (the connection is always made via port number 9901)

When entering the **Remote Server Name**, the machine name only should adequately identify the remote server:

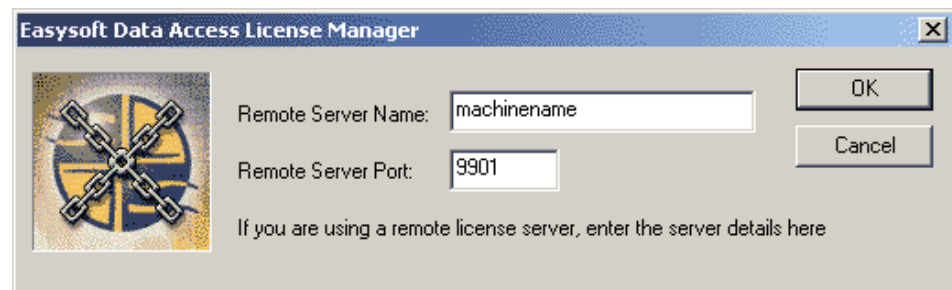


Figure 13: Entering Remote Server Name machine detail only

However, the domain name of the remote server must be specified if it differs from that of the product machine:

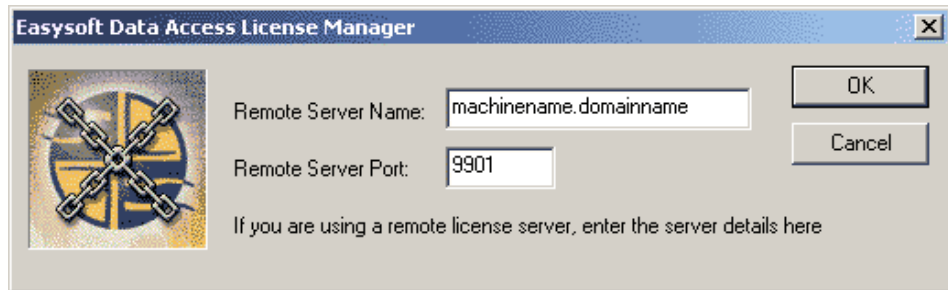


Figure 14: Entering Remote Server Name machine and domain details

The details that are required for the product machine to access the license server machine have now been written to the Windows registry:

```
Windows Registry Editor Version 5.00

[HKEY_LOCAL_MACHINE\SOFTWARE\Easysoft\LicenceServer]
"Server"="machinename"
"Port"="9901"
```

Figure 15: Easysoft License Server Registry settings

These settings can also be updated without using the License Manager if an Administrator distributes a `.reg` file to all the users of product machines.

REMOTE LICENSING

A guide to Easysoft Remote Server Licensing

This file may then be double-clicked in order to update the Windows Registry directly (assuming the user has Local Administrator privileges).

NB

The Easysoft License Manager can also be run manually by selecting **Start->Programs->Easysoft->Easysoft Data Access Licensing** from the Start menu.

GLOSSARY



Terms and definitions

Authorization code

You must have an authorization code for the Easysoft product you wish to license in order to obtain a purchased license. When you purchase a product your authorization code is emailed to you. You do not need an authorization code to obtain a trial license.

Client

A process performing tasks local to the current user, for example, formatting and displaying a report from data retrieved from the server.

Client/Server

The architecture whereby one process (the server) keeps track of global data, and another task (the client) is responsible for formatting and presenting the data. The client connects to the server and requests queries or actions be performed on its behalf. Often these processes run on different hosts across a local-area network.

Download

To retrieve data from a remote machine (or the Internet) to your local machine. Mechanisms for achieving this include FTP and the World Wide Web.

FTP

File Transfer Protocol - a standard method of transferring files between different machines.

Host

A computer visible on the network.

HTTP

HyperText Transfer Protocol. The means of transferring web pages.

Middleware

Software that is placed between the client and the server to improve or expand functionality.

License key

A string which is provided by Easysoft for use in the licensing process.

Server

A computer, or host, on the network, designed for power and robustness rather than user-friendliness and convenience. Servers typically run around-the-clock and carry central corporate data.

OR

A process performing the centralized component of some task, for example, extracting information from a corporate database.

TCP/IP

Transmission Control Protocol/Internet Protocol - a standard method of accessing data on different machines.

INDEX

Symbols

.reg file 29

A

added licenses 18

authorization code 14, 15, 17

B

backup license server machine 14

C

Caution box 9

concurrent connections 14

Configuring a license server machine 15

Configuring a product machine 27

Contact Information 16, 19

D

DNS name 14, 28

F

File Download 20

FTP site 20

L

License Type 17



INDEX

N

Non-expiring License	17
Note box	9

O

Online Request	18
----------------------	----

P

Platform note	9
port number	14, 28

R

Reference box	9
Registry settings	29
Remote License	28
Remote License button	14

U

uninstall	26
Uninstalling	25

W

Windows Services	13
------------------------	----

Y

Your Details dialog box	18
-------------------------------	----